

# molix

 2018/19  
catalog preview

Think. Feel. Fish.



## About us...

Molix is a dynamic brand from Italy and established itself worldwide with 100% Italian designed, innovative and originals fishing lures. Every single lure is manufactured following our high quality standards which easily rivals the toughest and finest world's standards.

## Think. Feel. Fish...

This means respect for the anglers, for fishing and for the fish as well. We strongly believe that build a lure is making the anglers happy to enjoy the outdoors and share with them a common lifestyle. The Italian lifestyle! Every time we develop a new lure we always "think" about how it can improve our fishing skills, how the anglers "feel" going for it and what's "fish" reaction to it. Enjoy Molix, enjoy your life and respect the environment around you.

## Molix expands USA Pro Staff Team

The Molix Pro Staff Team will be responsible for the marketing and promotion of the ten-year-old, Italian based bait company, Molix, in the USA. MOLIX's top quality, award winning Italian inspired products were first introduced to the US bass fishing market in 2010 by Mike Iaconelli with his signature 'Lover Series' baits and 'Ike's Signature Colors Series' as well as Molix's full line of spinner baits, wire baits and hollow body frogs.

Each angler on the Pro Staff Team will be working and promoting different aspects of the Italian based bait company's line of tackle during the 2018 Elite Series season and FLW tour. Moving forward, they will also contribute to the development of innovative Molix USA products.

## About our lures...

100% Italian design - in a country where living is style, attention to details and design.

High Quality Standards and innovation - Produced with high tech performance machinery, innovative materials and a strictly enforced quality control. Our lures feature a unique action as result of a combination of factors that make them noticeably different and innovative.

Attention to Details and Finishing - As Mike Iaconelli states about Molix wire baits: "really fine details, and when talking about details on a wire bait, I am not just talking about the lead head, but actual details on that head, a baitfish-looking head, with gills, with eyes, with color patterns"

Used successfully by Pros' - Professional anglers all over the world think that Molix makes unbelievable 100% quality baits.





S E R I E S

“these lures are your next  
secret fish catching weapon!”  
*Mike Deaconelli*

Ike signature baits



*Mike Deaconelli*





# LOVER TITANIUM Spinnerbait PAT.P.

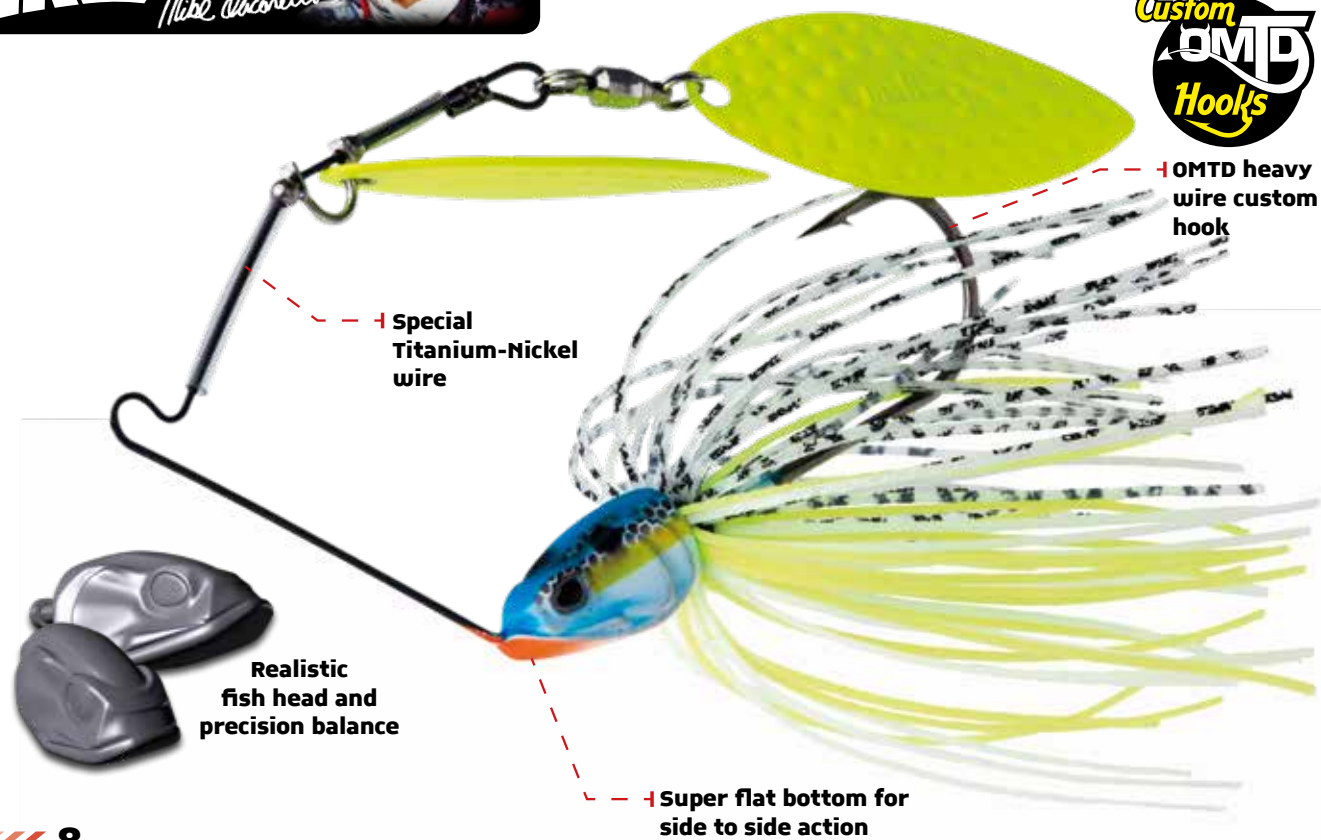
Weight **1/2 oz**  
Hook size **3/0**

After over two years of studies and tests under any fishing condition, the Lover Titanium spinnerbait come true. Developed with a new assembling concept that use a special wire-head connection, this spinnerbait guarantee an high security level with enhanced capability power. The special Titanium-Nickel wire used to build it will amplify the vibrations emitted by the blades, this will make this spinnerbait particularly effective on finicky fish and in high pressured waters. The special colors for the USA market have been selected by U.S. pros like Mike Iaconelli. Available as DW (Double Willow).

**APPROVED**

**Golden Team USA**  
Brandon Palaniuk | James Elam | Mike Iaconelli | Justin Lucas

Ike signature baits





**molix** think.feel.fish.



Weight **1/2 oz**  
Hook size **3/0**

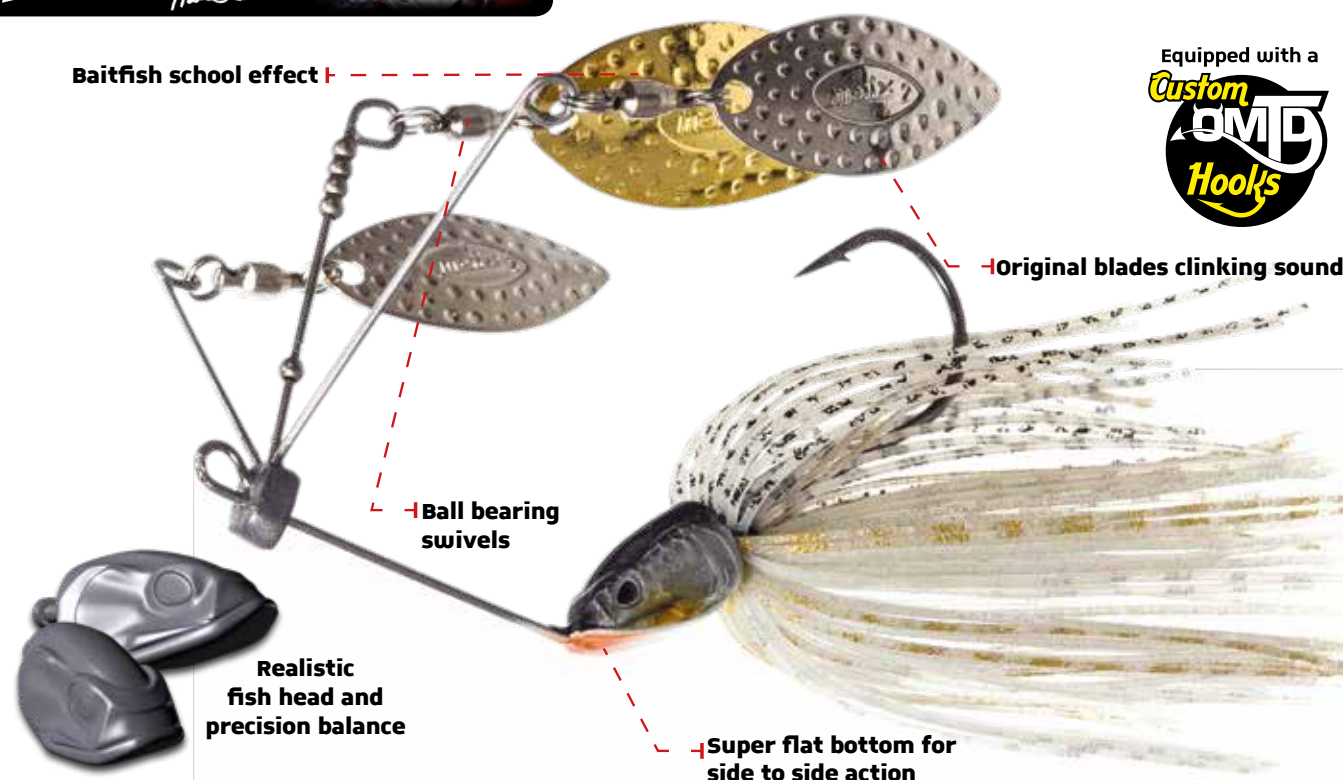
Developed by the Bassmaster and Elite angler Champion Mike Iaconelli, the revolutionary Lover Spinnerbait (pat.p) has a unique horizontal triple blade configuration for maximum underwater vibration and flash on the exclusive umbrella style presentation. The realistic fish head also offers precise balance during any retrieve and is killer when fished as a drop bait. From it's profile and head shape, to every cosmetic detail like lifelike eyes and fine-cut, color grading skirt patterns, this bait will mesmerize the fish! The Lover Spinnerbait is also available in the special "Ike" signature color and the skirts are hand tied, providing a more natural profile and flow! Equipped with a high performance OMTD super strong U.S. approved single hook, these lures are your next secret fish catching weapon!

Ike signature baits

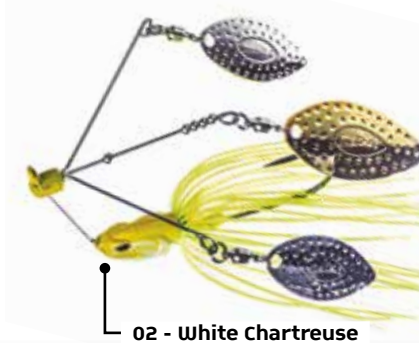


Brandon Palaniuk | James Elam | Mike Iaconelli | Justin Lucas

APPROVED



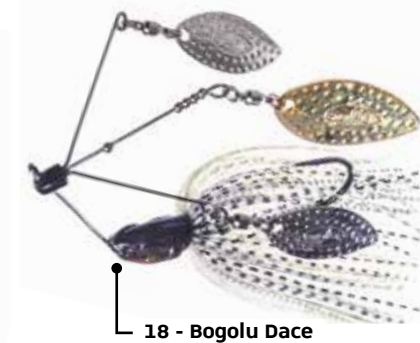
## SPINNERBAIT



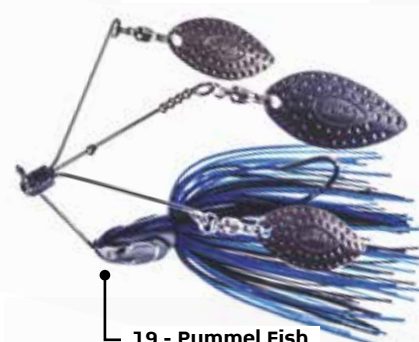
02 - White Chartreuse



07 - Special White



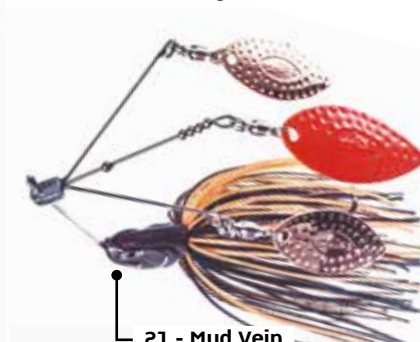
18 - Bogolu Dace



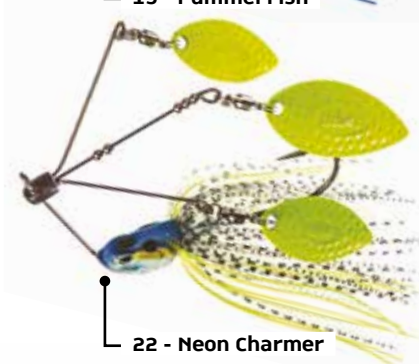
19 - Pummel Fish



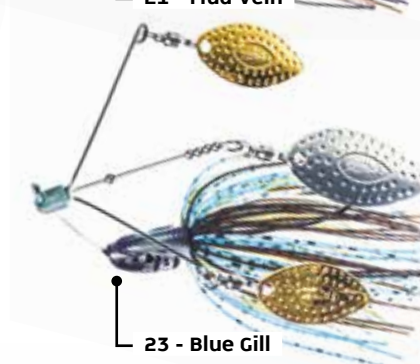
20 - Purple Sinsay



21 - Mud Vein



22 - Neon Charmer



23 - Blue Gill







Weight **3/8 oz**  
Rattlin'  
Hook size **3/0**

Weight **1/2 oz**  
Hook size **3/0**

The Lover is a Mike Iaconelli signature lure built with the latest and most performing materials available, such as the special grade ABS body. When matched with our exclusive "reverse shovel lip," the Lover exceeds any known action when it comes to scanning the water and searching for predators. It can be used with ease in heavy cover with the single high performance hook rigged with a special stop for trailers. For structure free water or short striking fish, use the version with the special dressed treble hook.

The Molix Lover Skirted Vibration Jig can accommodate a wide range of soft plastic trailers. However, the Molix RA Shad Swimmbait is the recommended soft plastic trailer.

Available in a range of proven colors, the Molix Lover Skirted Vibration Jig is perfect for fishing around timber, rip rap, boat docks or other aquatic vegetation. sinking with slow retrieve and shallow with fast retrieve.



Ike signature baits



## VIBRATION JIGS





# LOVER BUZZ SS Junior

**SUPER SQUEAKY**  
REGISTERED DESIGN

Weight **1/4 oz**  
Hook size **2/0**

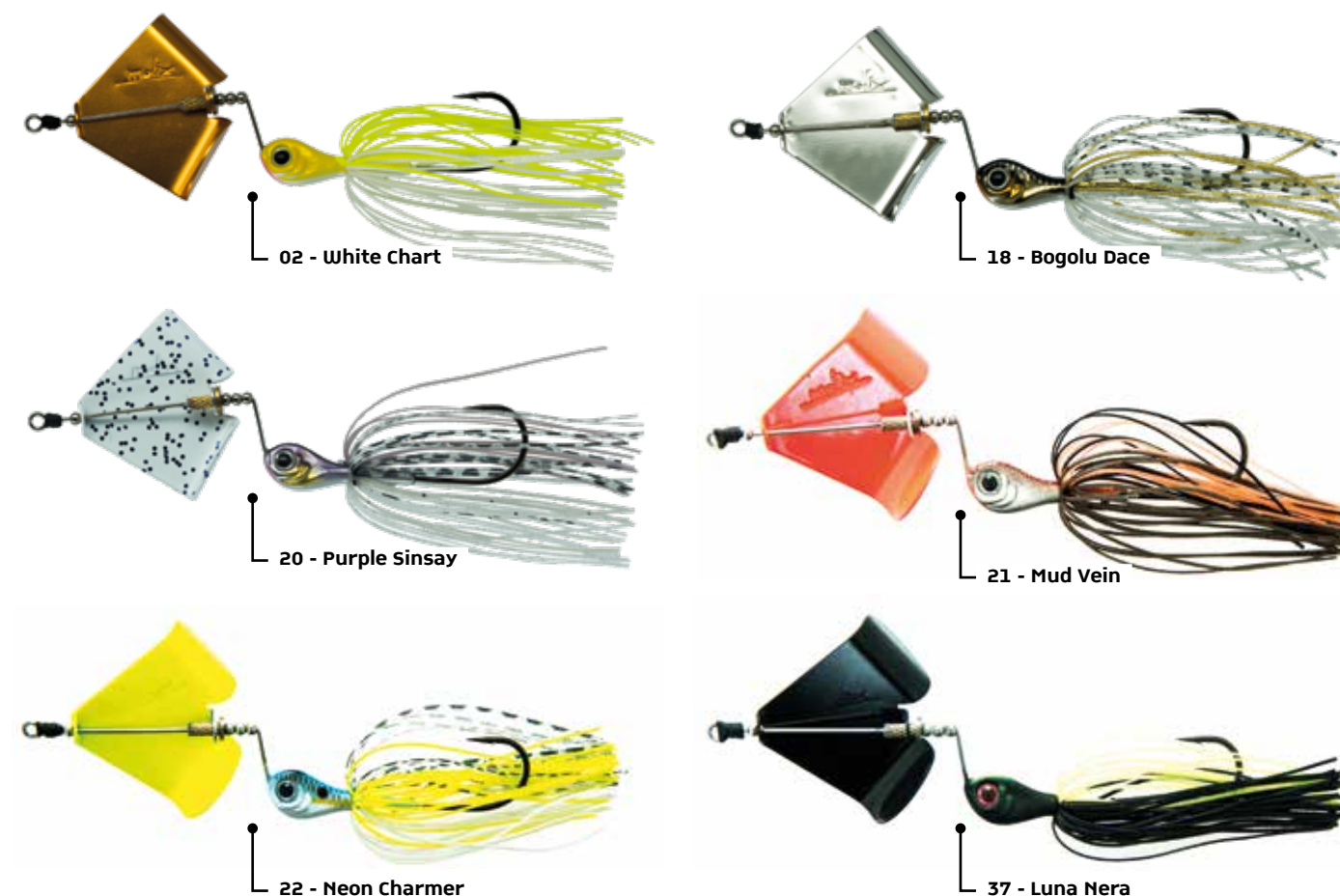
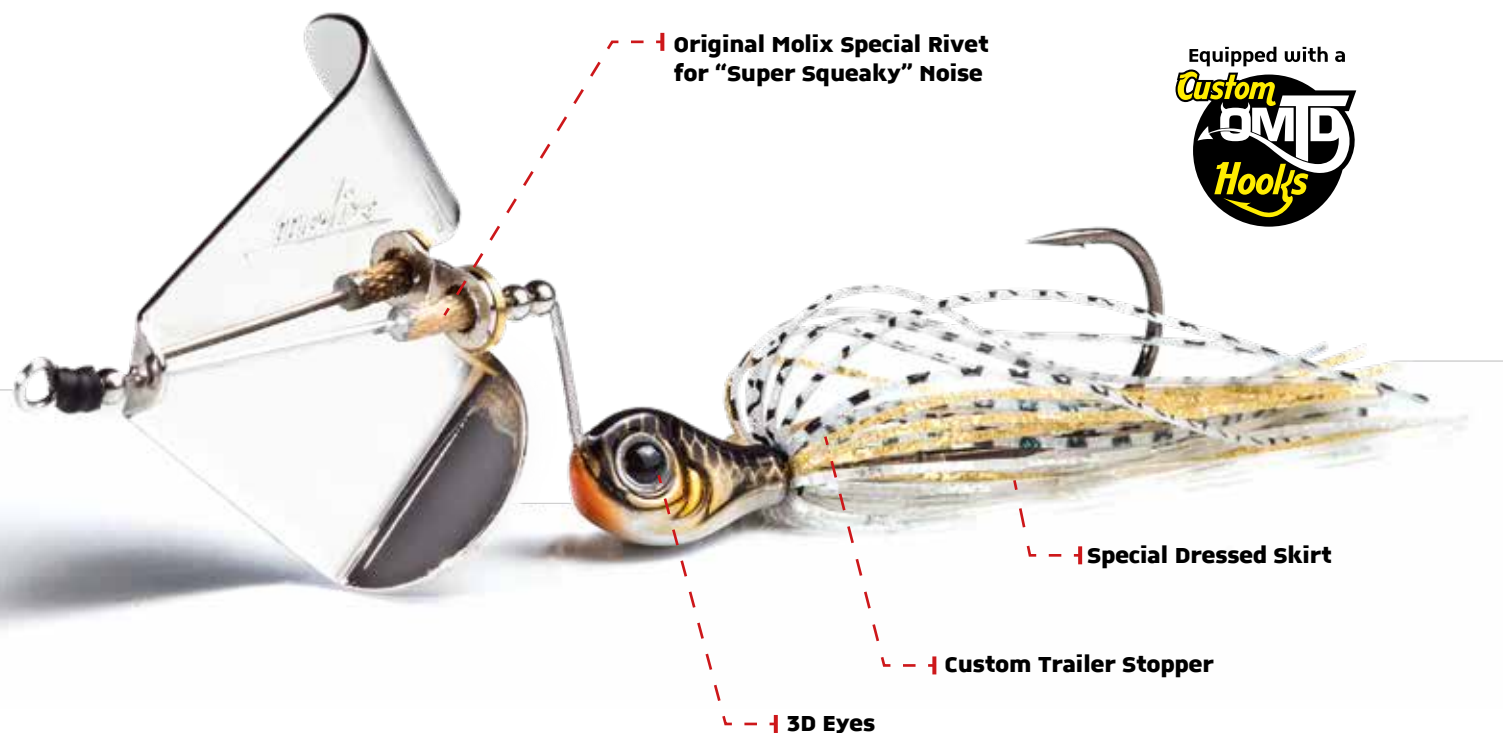
After the famous Lover Buzz SS, Molix realizes, in collaboration with Mike Iaconelli, the Lover Buzz SS Junior. Compared to the first, the body and the lip appear greatly reduced to obtain an inline buzz to be used with a light equipment, for an approach less invasive than a traditional buzz bait. Its vibrations on the surface, more discreet, the special "squeaky" noise, and its compact size can stimulate the attack of apathetic and mistrustful fishes. It is effective in spots with high fishing pressure.

**APPROVED**

Ike signature baits



Brandon Palaniuk | James Elam | Mike Iaconelli | Justin Lucas





# LOVER BUZZSS

**SUPER SQUEAKY**  
REGISTERED DESIGN

Weight **1/2 oz**  
Hook size **3/0**

When the Italian design meets a talented U.S. Pro angler like Mike Iaconelli what comes next is everything but some that really help to catch more fish. The LOVER BUZZSS is an innovative in-line buzzbait made to perform with any kind of predator and conditions. Precise casts and excellent distances even with strong wind. It features a special loud sounds underwater that attract lot more fish.

**APPROVED**

Ike signature baits



## BUZZBAITS







Weight **3/4 oz**  
Length **3.3/4 in**

Weight **1 oz**  
Length **4 in**

The Lover Spoon "Ike Signature" bait is made with specific "curve" and personalized "fish skin" hammered body.

Front double hook with special magnet holding system. Strong U.S. approved rear treble hook.

**APPROVED**



Ike signature baits



“try the brand new lover spoon and you gonna catch way more fish...”

*Mike Iaconelli*



— Fish skin hammered body



71 - Charming Shad



145 - Blue Gill



148 - Silver Mirror



149 - Gold Mirror



215 - Gunsmoke





# WATERSLASH

## DOUBLE WILLOW

Weight **3/8 oz**  
Hook Size **2/0**

Weight **1/2 oz**  
Hook Size **2/0**

The compact size of the Water Slash is the perfect combination between design and functionality, and allows each angler to succeed in the toughest fishing condition where a finesse spinnerbait presentation is required to catch more fish. Its form is slightly compressed on the head and proven to give the better balance at any speed and retrieve. The blade weight is specifically set to not overload the spinnerbait and begin moving immediately after each cast. The Water Slash is made with a special steel wire that increase vibration on the arm following the requirements used for the most famous "finesse" spinnerbaits. The high resistance makes it perfect to use especially in heavy cover. The skirt is made with hand tied "fine cut" silicone and features a real life like action typical of schooling baitfish. The special colors for the USA market have been selected by U.S. pros like Mike Iaconelli.



**APPROVED**

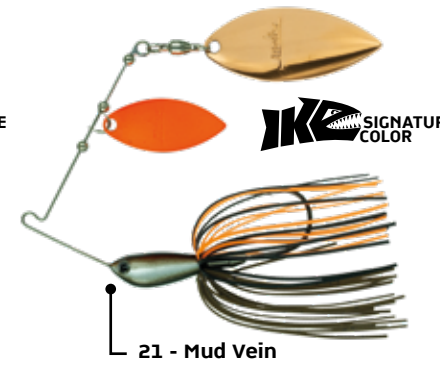
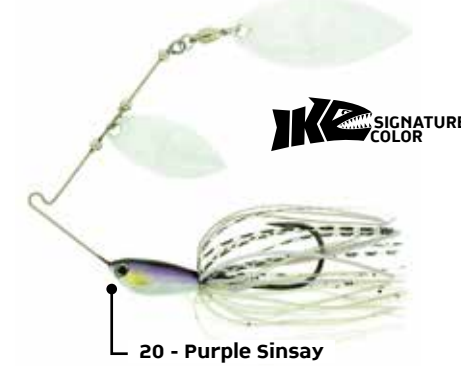


**Golden Team USA**  
Brandon Palaniuk | James Elam | Mike Iaconelli | Justin Lucas

Fine cut silicone skirt  
LSS (Live Skirt System)

Equipped with a  
**Custom GMP Hooks**

## SPINNERBAITS





**NEW**

# WATERSLASH

## DOUBLE COLORADO

Weight **3/8 oz**  
Hook Size **2/0**

Weight **1/2 oz**  
Hook Size **2/0**

The combination of a Double Colorado blade came as a suggestions from Elite Pro Anglers Mike Iaconelli, Brandon Palaniuk (AOY 2017), Justin Lucas and James Elam.

The compact size of the Water Slash is the perfect combination between design and functionality and allows each angler to succeed in the toughest fishing condition where a finesse spinnerbait presentation is required to catch more fish. Its form is slightly compressed on the head and proven to give the better balance at any speed and retrieve. The blade weight is specifically set to not overload the spinnerbait and begin moving immediately after each cast. The Water Slash is made with a special steel wire that increase vibration on the arm following the requirements used for the most famous "finesse" spinnerbaits. The high resistance makes it perfect to use especially in heavy cover. The skirt is made with hand tied "fine cut" silicone and features a real life like action typical of schooling baitfish.

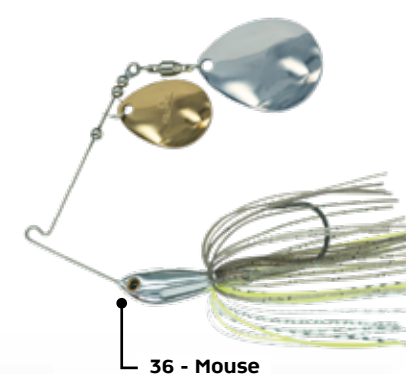
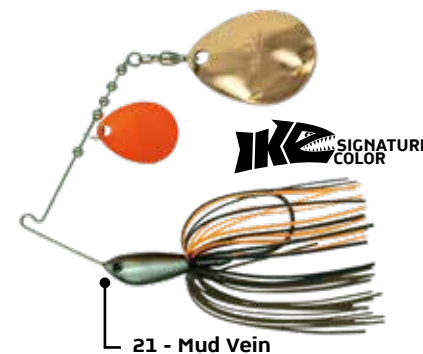
**APPROVED**



Fine cut silicone skirt  
LSS (Live Skirt System)



## SPINNERBAITS





# VENATOR

## DOUBLE WILLOW

Weight **1/2 oz**  
Hook Size **4/0**

Weight **5/8 oz**  
Hook Size **4/0**

The Venator is built with a “tapered” stainless steel wire. It’s made with a thinner and flexible upper arm to trigger more vibrations right on the blades and a thicker lower arm to give more strength when you need to swing the fish right into the boat. The hook is made with a heavy wire and its very high quality compared with other spinnerbaits sold on the market. All those features make the new Venator one of the strongest and sought after lures ever build. Molix also paid serious attention to the head form. It is designed with a special “Flat Head” shape that gives the perfect balance during any retrieve to go with a super attractive side to side action. The oversized 3D eye is proven to attract the fish and give a natural appeal to this lure. The skirt is made with “fine cut” silicon and features a real life like action typical of schooling baitfish. The wide profile blade used on Venator helps to increase vibrations even during low speed and slow rolling retrieves.



## SPINNERBAITS



## MIKE'S TIPS

### 18 - Bogolu Dace

This color was modeled from the small minnow, chub, and dace forage species that bass love to eat! The skirt and head colors enhance the blade flash and vibration and cause the fish to react! This is a really versatile color that really shines in clearer water and stream and river situations!

### 19 - Pummel Fish

This was based off of the classic black and blue color that is so effective in other type of lures like jigs and vibration jigs. The toned down black blades make this one really special! It is perfect for low light conditions and for fishing at night! It's also a sleeper when fishing in extremely clear water!

### 20 - Purple Sinsay

This color was taken from the fact that most bait fish forage species have a white and purple sheen to their coloration. Shad, Alewife, Herring, White Perch, Crappie, White Bass and many other types of forage have these same color attributes. This color is also an amazing color in rivers and tidal water!

### 21 - Mud Vein

This is really cool color combination that is normally hard to find. It has several applications. First, for extremely muddy or stained water, the front orange blade and copper blade combination allows the bass to find it more easily. Also, it is a perfect match when fishing in tannic based water color where forage species like golden shiners and roach are present. The copper blade makes this one stand out!

### 22 - Neon Charmer

This loud color spinnerbaits has been one of my favorite colors for many years! It has several applications. First, for extremely aggressive fish and species like smallmouth or spotted bass, the bright Chartreuse blades act as a aggravator and trigger an impulse strike; especially when retrieved very fast! The skirt color and flat mat finish head, make it a perfect match for many perch and panfish forage species that have a lot of Chartreuse and pale orange coloration. Finally, like Mud Vein, it's also an amazing dirty water color and helps the bass track down the bait.

### 23 - Blue Gill

This color was created to match one of the most KEY forage species that bass eat: panfish, bluegill, sunfish, shell crackers and war mouths. The combination of blues, greens, and yellows in addition to the bar patterned head, make this a perfect match for all water conditions. This is a super versatile color that I love to fish any time I'm fishing around these panfish species!

*Mike Iaconelli*



# [KENTO-JIG]

SWIMMING & HEAVY COVER

Weight **3/8 oz**

Weight **1/2 oz**

The Molix Kento Jig is built with versatility in mind. Each jig head has been perfectly shaped and balanced for an easy penetration and perfect swimming. The number of fibers of the weedguard is based on the jig weight and combines a perfect weedless effect for solid hook sets. Offering a bait keeper, soft plastic trailers will be firmly held. The Kento Jig offers a very fine cut silicone skirt (Live Skirt System), providing natural movement and life like action.

APPROVED



## SKIRTED JIGS

### CLASSIC COLORS



### SPECIAL SIGNATURE COLORS

These special Signature Colors series are developed from the experience of the Elite Pro Anglers Brandon Palaniuk (AOY 2017), James Elam and Justin Lucas

**NEW**





# [TENAX - JIG]

FLIPPING & HEAVY COVER

*Wide Gap*

The Tenax is a jig designed to operate at its best in the densest vegetation and thickest cover. The head, an exclusive bullet-shaped design, facilitates a greater penetration even in the most intricate fishing conditions. The high efficiency of the weed guard is guaranteed by the fibers adjusted to the weight of the jig in order to reduce the risk of snagging. This U.S. Edition Tenax is built with the OMTD OH1900 hook featuring a wider gap which performs also with big trailers that give a visible stand up effect. The hook point design allows better hook up and reduces the lost of the fish during the fight and retrieve. The skirt is made with an innovative "fine cut" silicone, which provides it a very realistic and natural motion, called "LSS" (Live Skirt System).



APPROVED

Weight **3/8 oz**

Weight **1/2 oz**

Perfect weedless effect for solid hook sets.

OMTD wide gap heavy wire custom hook



Head bullet-shaped design

Fine cut silicone skirt LSS (Live Skirt System)

## SKIRTED JIGS

### CLASSIC COLORS



### SPECIAL SIGNATURE COLORS

These special Signature Colors series are developed from the experience of the Elite Pro Anglers Brandon Palaniuk (AOY 2017), James Elam and Justin Lucas

**NEW**





# [MF-JIG]

MOLIX FOOTBALL JIG

Weight **3/8 oz**

Weight **1/2 oz**

The MF Jig it's made with tungsten composite which is an environmentally safer material. Its extremely sensible and durable. It's made with a new "Bi-Round" head, studied to give this jig a unique action making it more versatile. It's realized with fine cut silicon skirt and heavy duty weed-guard. The special hook design improves lure penetration.



Perfect weedless effect for solid hook sets.

**TUNGSTEN COMPOUND**

"Bi-Round" head made with tungsten composite

OMTD wide gap heavy wire custom hook



Fine cut silicone skirt LSS (Live Skirt System)

## SKIRTED JIGS

### CLASSIC COLORS



### SPECIAL SIGNATURE COLORS

These special Signature Colors series are developed from the experience of the Elite Pro Anglers Brandon Palaniuk (AOY 2017), James Elam and Justin Lucas

**NEW**

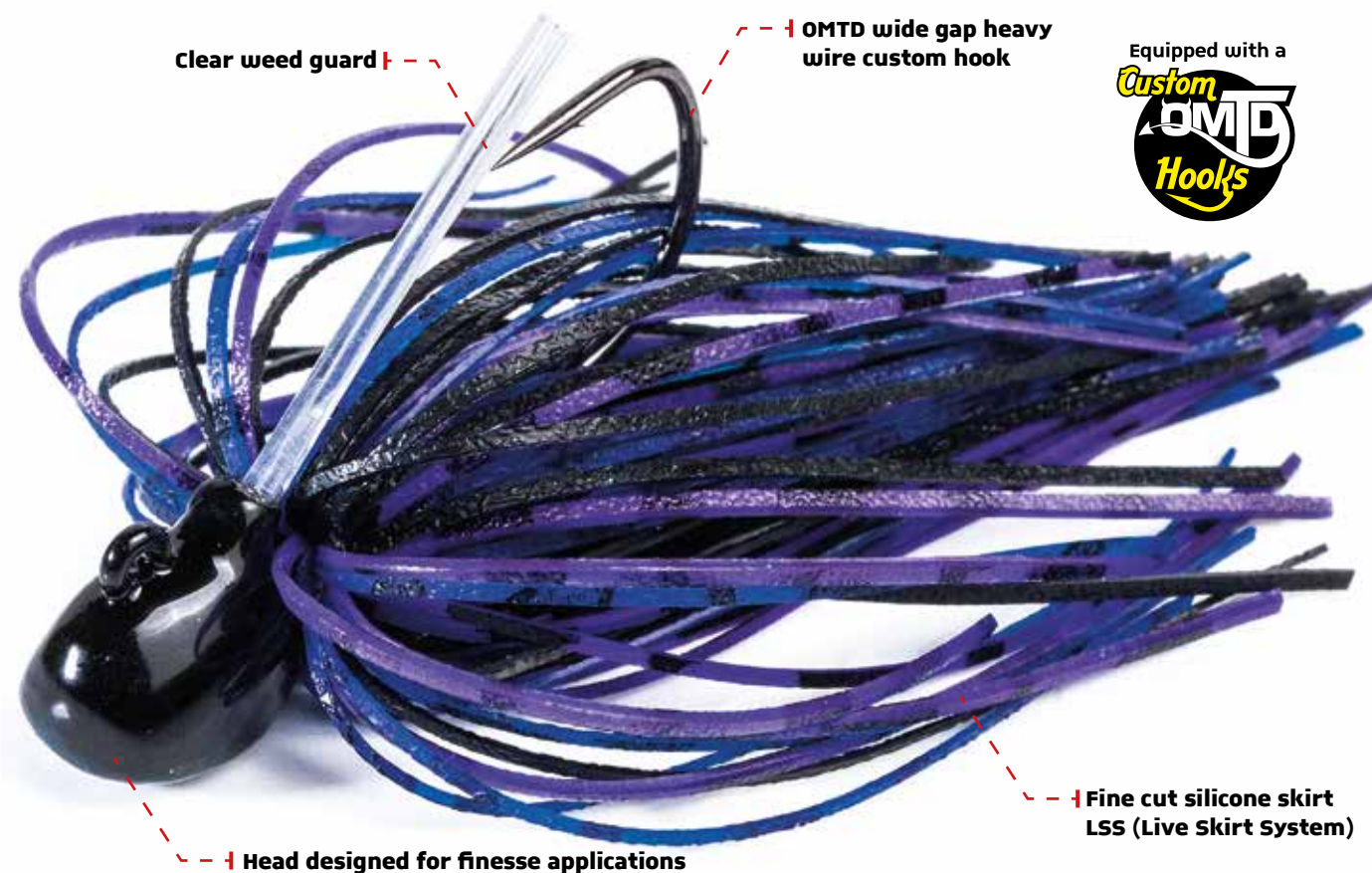




# [NANO-JIG]

FINESSE & STILL PRESENTATION

The Nano Jig is designed for finesse applications when a subtle and natural presentation is required. It is an evolution of the Racing Jig head with the addition of an ultra-fine silicone skirt and reinforced the weed guard. It's ideal for a perfect presentation inside thick covers or to let it slip between the surfacing structures. The versatility of its head allows the use of it in any environment. The Nano Jig is recommended when you need smaller and effective jigs, and a more "finesse" approach helps sorting out even the most difficult days.



Weight **3/32 oz**

Weight **1/8 oz**

Weight **3/16 oz**

## SKIRTED JIGS

### CLASSIC COLORS



## SPECIAL SIGNATURE COLORS

These special Signature Colors series are developed from the experience of the Elite Pro Anglers Brandon Palaniuk (AOY 2017), James Elam and Justin Lucas

**NEW**





**NEW PROJECT**

# Supernato Frog

PAT.P.

Total Weight **3/4 oz**  
Total Length **4.1/2 in**  
Body Length **2.1/2 in**  
Tail Length **2 in**

A new hybrid bait developed by Molix, with the contribution of Carl Jocumsen, Australian-USA Pro Angler, expert and talented frog angler. It was conceived by exploiting the hydrodynamics and the buoyancy of the realistic body of a classic frog bait. The double tail made of a high density mixture creates high frequency vibrations. The two parts of the bait are joined by a solid mechanism fixed in the back part of the body of the frog. The fastening system allows a quick and precise assembly and the possibility to use customized tails of any type and shape.

The inward-facing appendages can move during the retrieval phases like a true propeller. It lends itself to slow and fast retrieval over the vegetation or also to powerful jerks-strokes.

The Supernato Frog is armed with a double and strong OMTD Custom hook.



Super prop action

Vent hole to  
facility hook-set

Lifelike skin  
and 3D colors

Possibility to use customized  
tails of any type and shape

Super strong  
custom  
double hook

Original tail keeper system

**COMING  
SOON**



# Supernato

REGISTERED DESIGN

**SUPERNATO**  
Weight **3/4 oz**  
Length **2.3/4 in**

**SUPERNATO BABY**  
Weight **3/8 oz**  
Length **1.3/4 in**



Brandon Palaniuk | Carl Jocumsen | Mike Iaconelli | James Elam | Justin Lucas

The Molix Supernato is a hybrid crankbait offering a whole new level of versatility. The idea was to have a crankbait that you can use inside heavy cover and thick vegetation as well as open water, and that also works at a variety of depths (depending on retrieve speed). Created with the best materials and assembled by hand, piece-by-piece by selected craftsmen, it is built with two different sections - one hard and one soft.

The Supernato is coated with a special film that provides the bait with a very realistic skin effect. It will be available in eight unbeatable color patterns.



Squeeze

Water fill for  
crankbait action

Realistic  
skin effect

Super strong custom  
double hook

Original snagless lip



54 - Daddy Bass



59 - WCC Red Craw



71 - Charming Shad



72 - Leopard Frog



91 - Gray Mouse



140 - Bloody Fish



145 - Blue Gill



201 - Moss Brown Craw





**Sneaky FROG**

REGISTERED DESIGN

**SNEAKY FROG**  
Weight **3/4 oz**  
Length **3.1/2 in**

**SNEAKY FROG BABY**  
Weight **3/8 oz**  
Length **2.3/8 in**

**APPROVED**

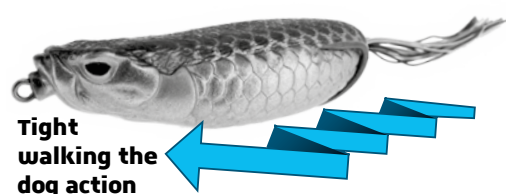


Brandon Palaniuk | Carl Jocumsen | Mike Iaconelli | James Elam | Justin Lucas

The Sneaky Frog perfectly combines the points of strength of a frog lure with the topwater bait. It's born to be used skipping, walking the dog, or simply letting it slide on top of the water. A unique and innovative swimming action. The lifelike skin and 3D colors give it a captivating and particularly attracting pattern.

Equipped with a  
**Custom BMB Hooks**

Realistic skin effect



Tight walking the dog action

Super strong custom double hook



59 - WCC Red Craw



72 - Leopard Frog



91 - Grey Mouse



180 - Silver Albino



182 - Tarpon



239 - Black Mamba





# Supernato Beetle

REGISTERED  
DESIGN

**SUPERNATO BEETLE**  
Weight **5/8 oz**  
Length **3 in**

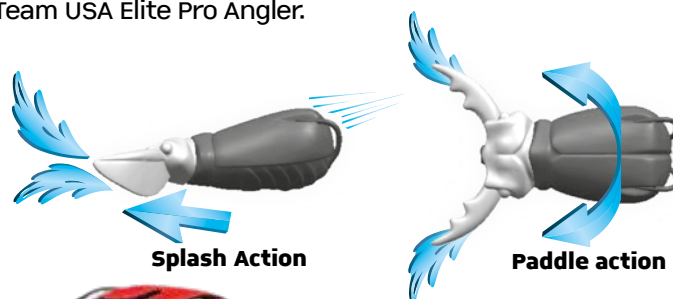
**SUPERNATO BEETLE BABY**  
Weight **3/16 oz**  
Length **2 in**

APPROVED

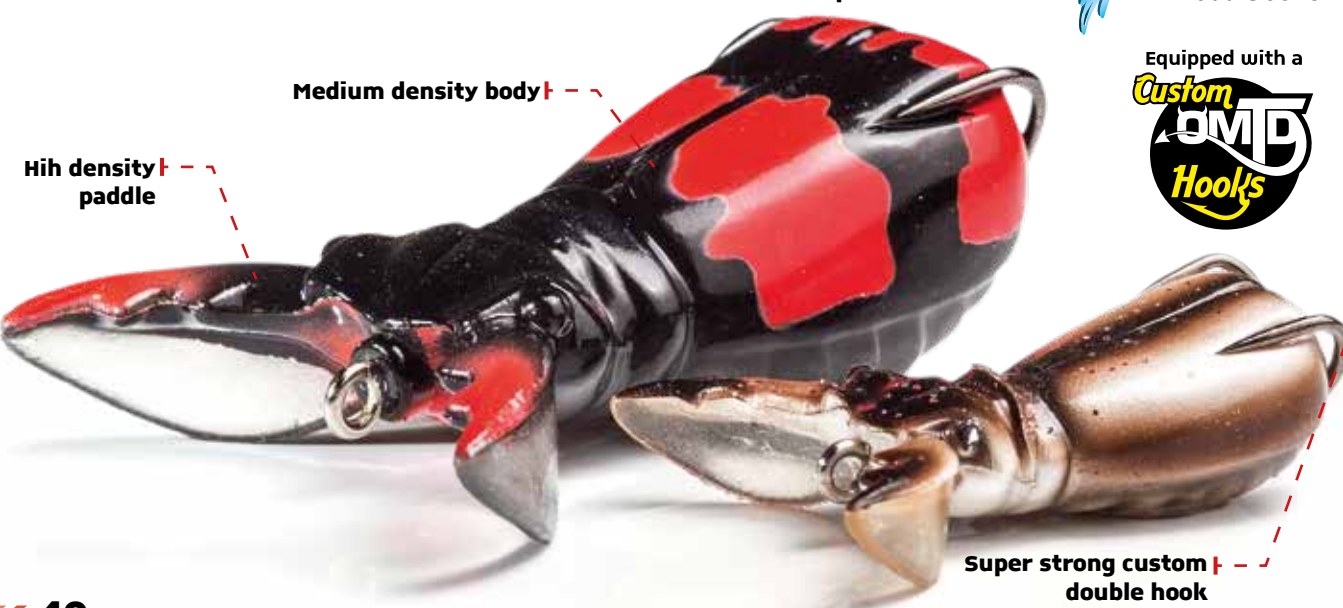


Brandon Palaniuk | Carl Jocumsen | Mike Iaconelli | James Elam | Justin Lucas

The Supernato Beetle is unique and extraordinarily versatile. Easy to fish and good for all the open waters as well as heavy cover or intense vegetation. Its natural "paddle and splash" action during retrieves drives the fish crazy! It's built with a special soft body and a strong double hook for an easy hook-up. The Supernato Beetle has been tested and approved by Molix Golden Team USA Elite Pro Angler.



Equipped with a  
**Custom  
DMT  
Hooks**



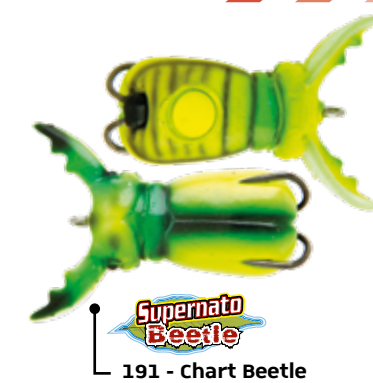
## HOLLOW BODY



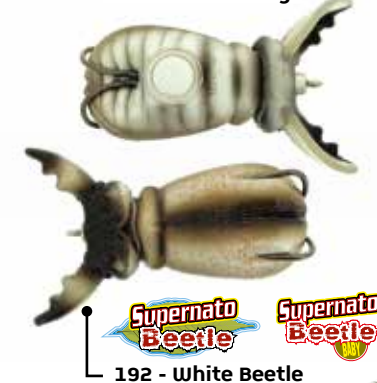
Supernato Beetle  
107 - Brown Frog



Supernato Beetle  
190 - Black Scrabble



Supernato Beetle  
191 - Chart Beetle



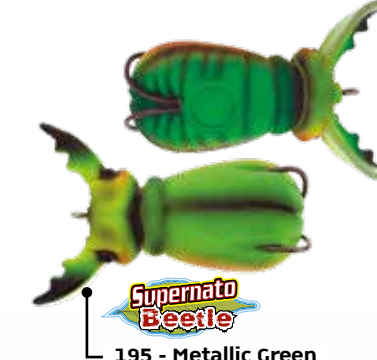
Supernato Beetle  
192 - White Beetle



Supernato Beetle  
193 - Stag Beetle



Supernato Beetle  
194 - Metallic Orange



Supernato Beetle  
195 - Metallic Green



Supernato Beetle  
221 - Black Red Stripes





# CREATURE 4"

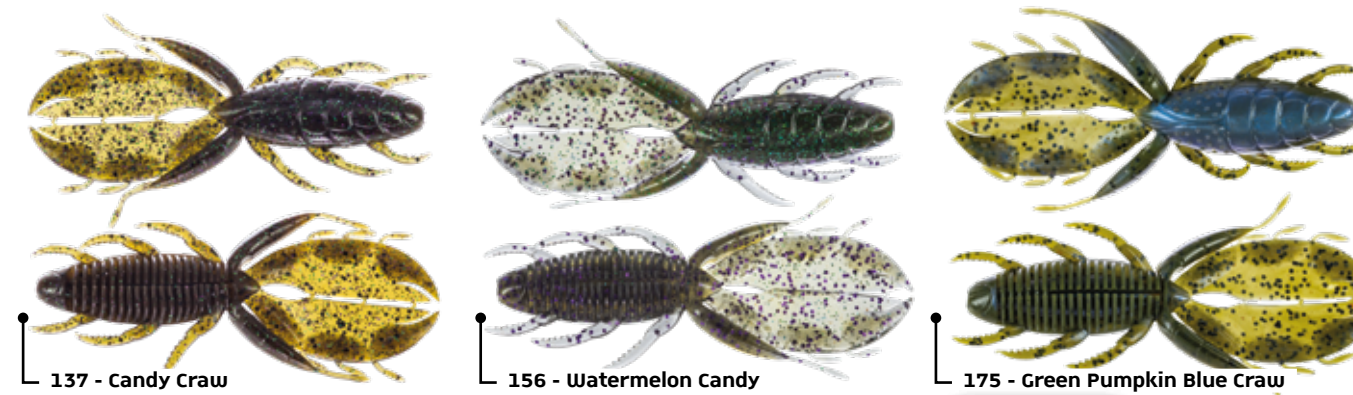
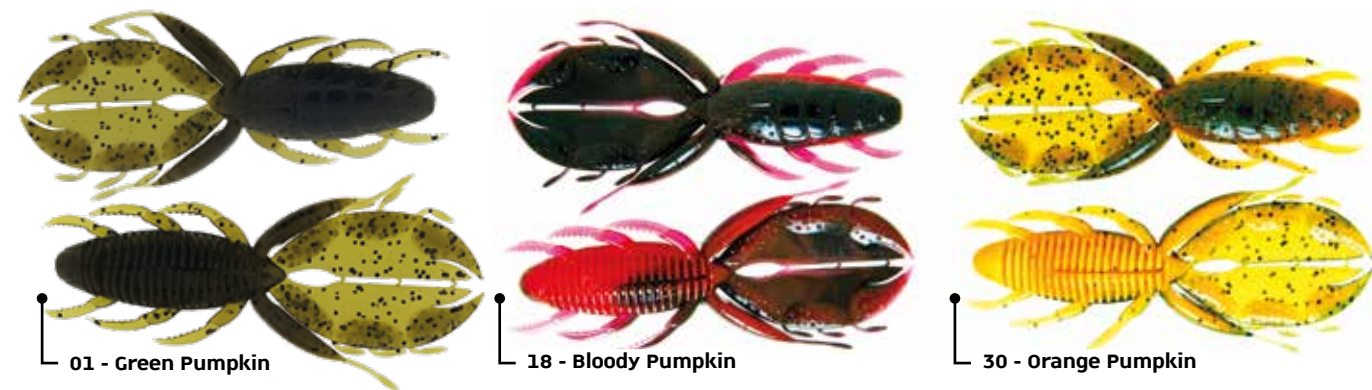
REGISTERED DESIGN

Length **4 in**  
5 pcs. per pack

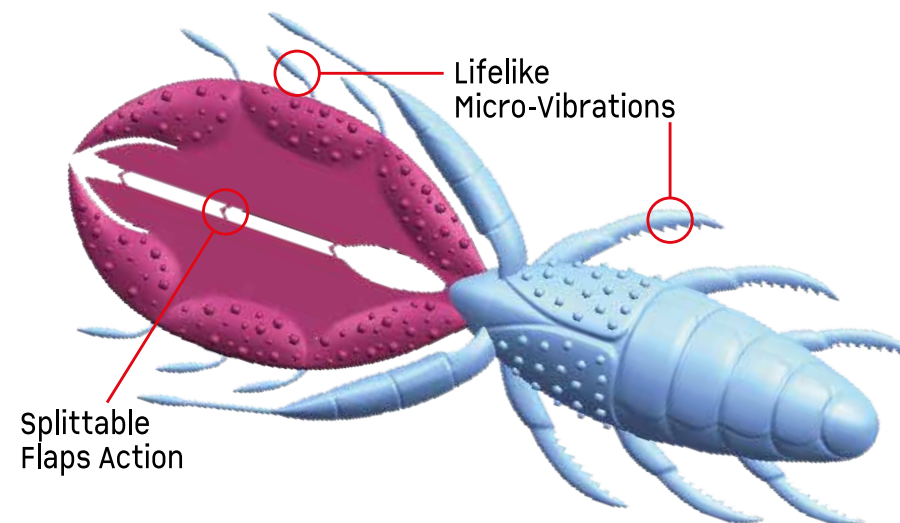
The new Molix Creature is a perfect combination of details and funtionality. The special appendices give it a kind of micro-vibrations that combined with the flap action make it a special lure. A real unique Molix lifelike action that can let you conceive soft bait fishing from a differenct prespective.



**JAMES ELAM  
& CARL JOGUMSEN  
APPROVED**



**NEW COLOR**



**NEW COLOR**



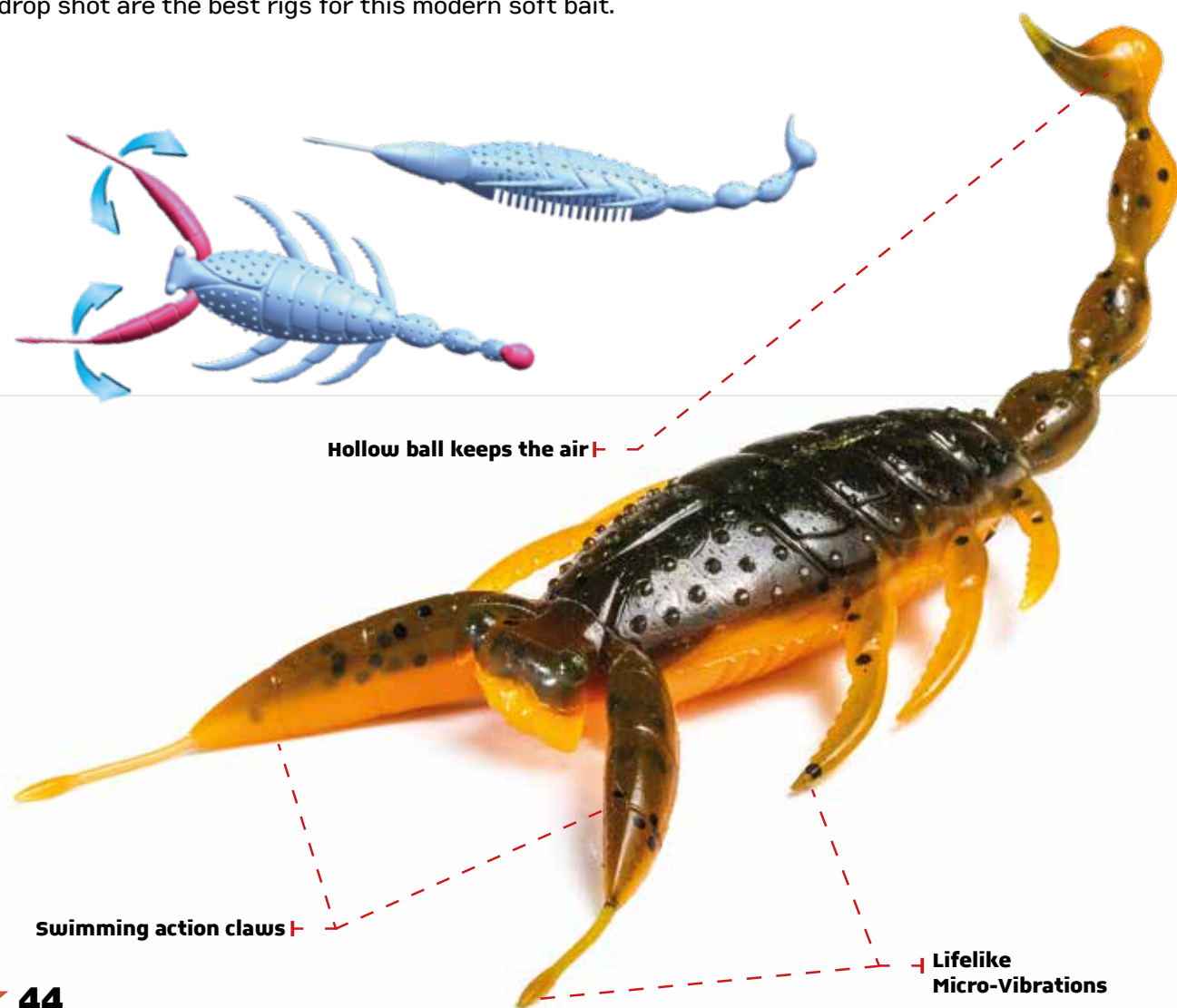
# SC BUG

**SUPER SWIMMING ACTION**  
REGISTERED DESIGN

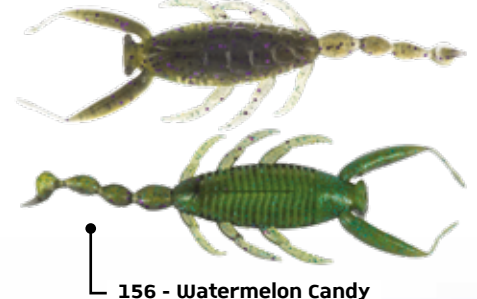
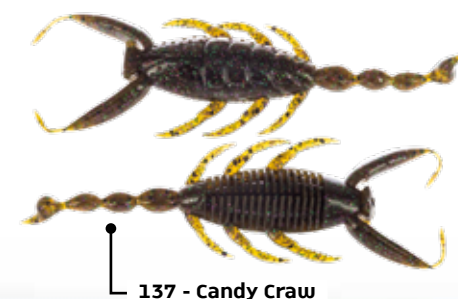
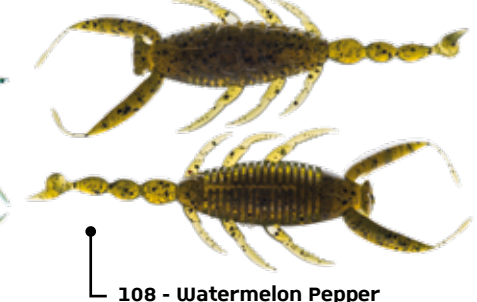
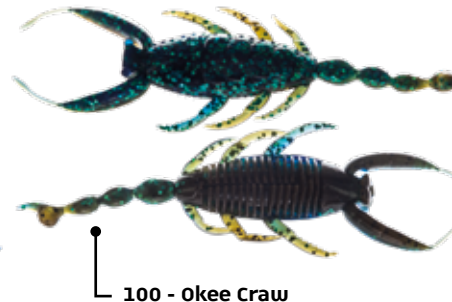
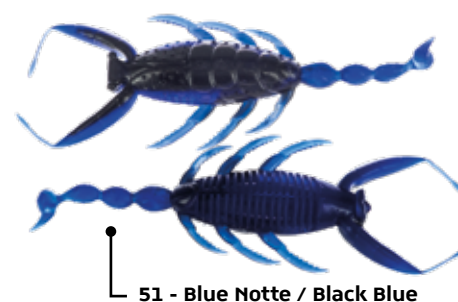
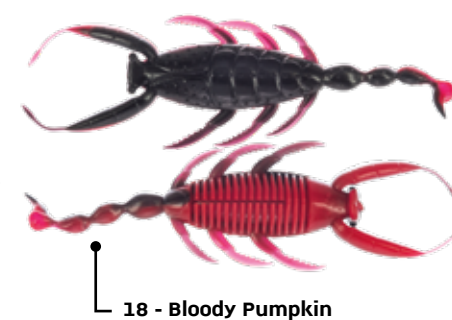
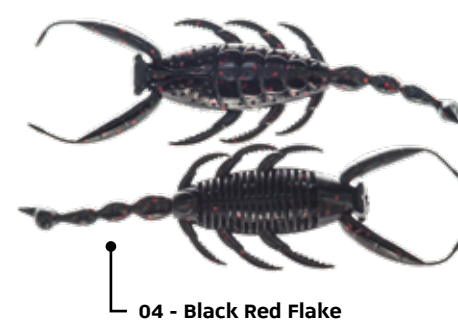
Length **4 in**  
5 pcs. per pack



The innovative Molix SC Bug is a perfect combination of details and functionality. The special appendices give it a kind of micro-vibrations that combined with the hollow ball on the tail make it a special lure. A real unique Molix lifelike action that can let you conceive soft bait fishing from a different perspective. Incredible swimming action in any kind of situations. Texas rig, jig head, insert weight, carolina rig, drop shot are the best rigs for this modern soft bait.



## CREATURES





# FREAKY FLIP

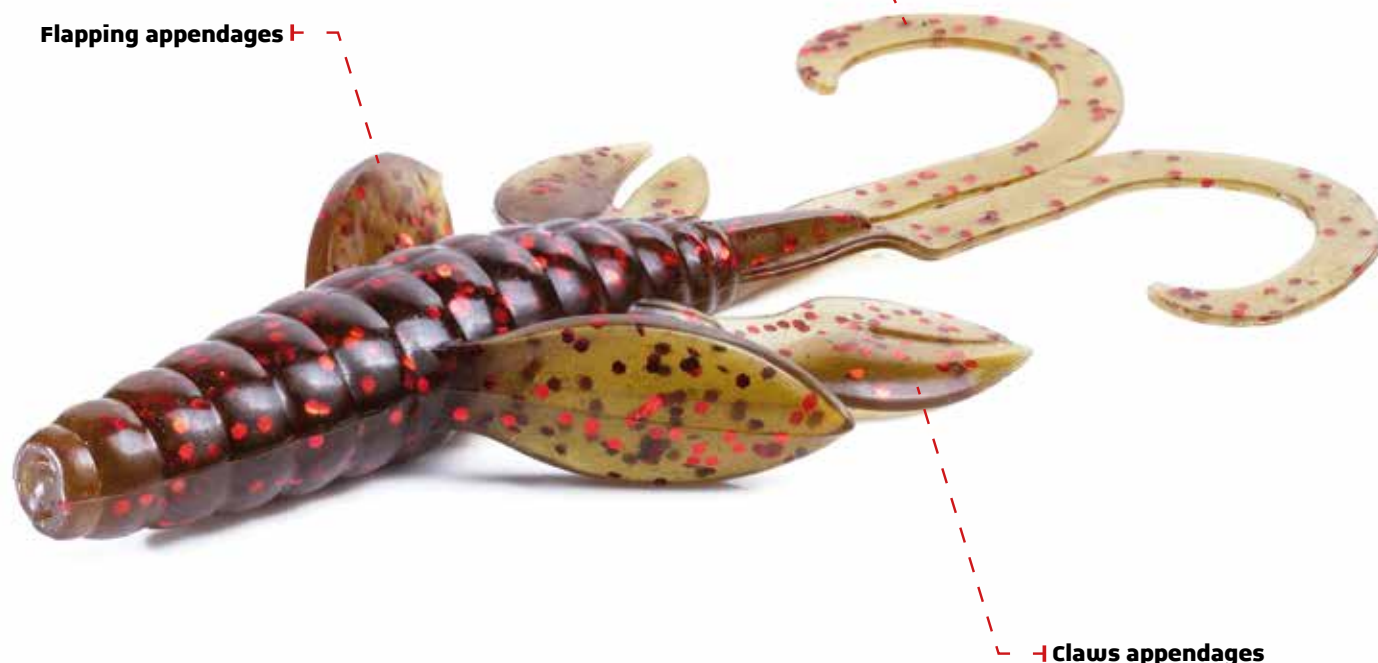
Length **4 in**  
8 pcs. per pack



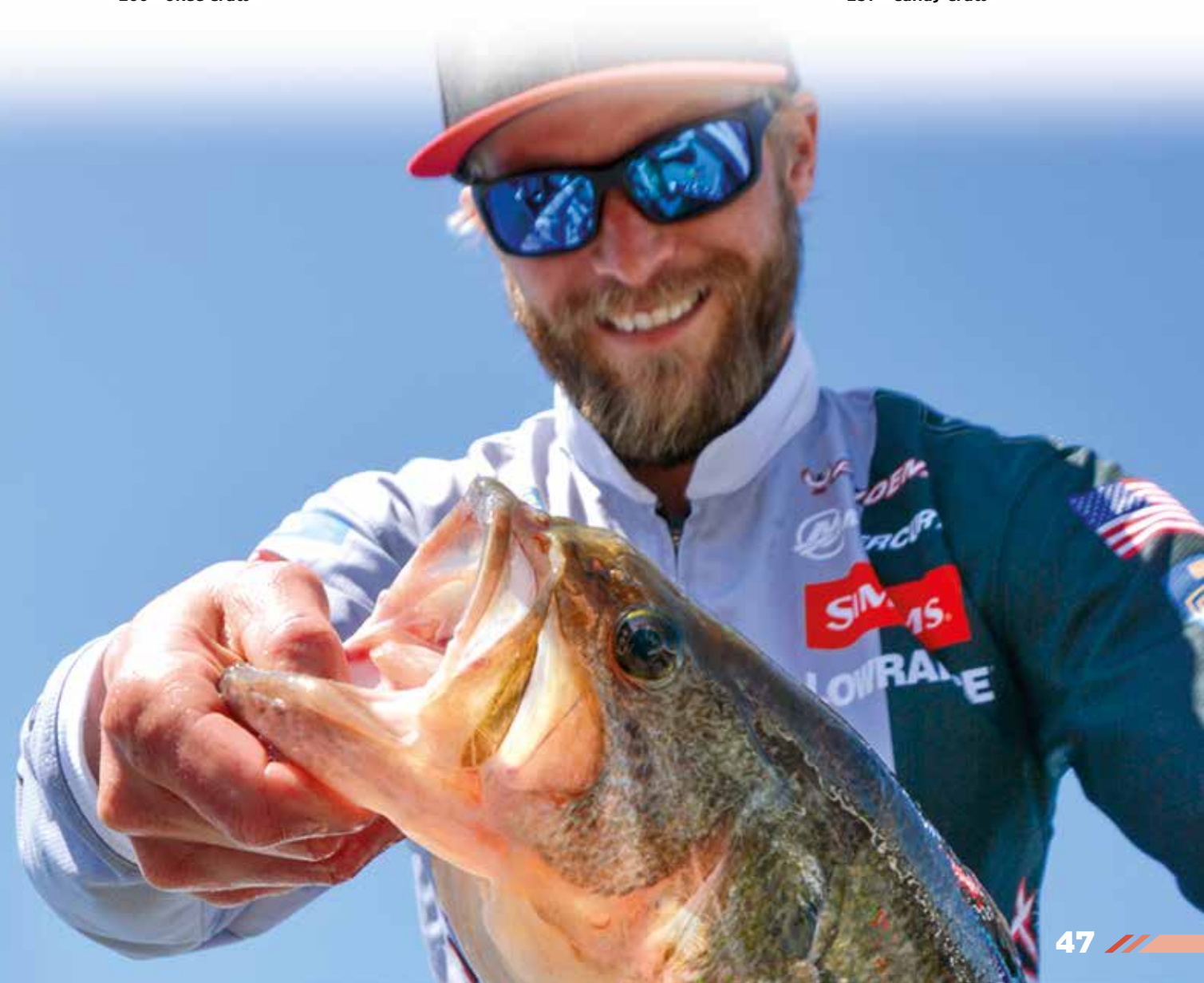
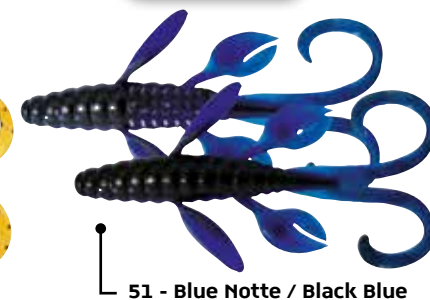
The Molix Freaky Flip features a medium density mineral plastic blend that allows the Freaky Flip to better penetrate into heavy cover and vegetation with natural movements. Ideal for flipping and pitching, it is also poured with micro salt crystals and enhanced with Bio-Amino scent, an exclusive natural extract base formula - for added fish attraction. Available in several colors, the Molix Freaky Flip is used by Molix US pro staffers, Bassmaster Elite Series.

Ultra lifelike action

Flapping appendages



## CREATURES



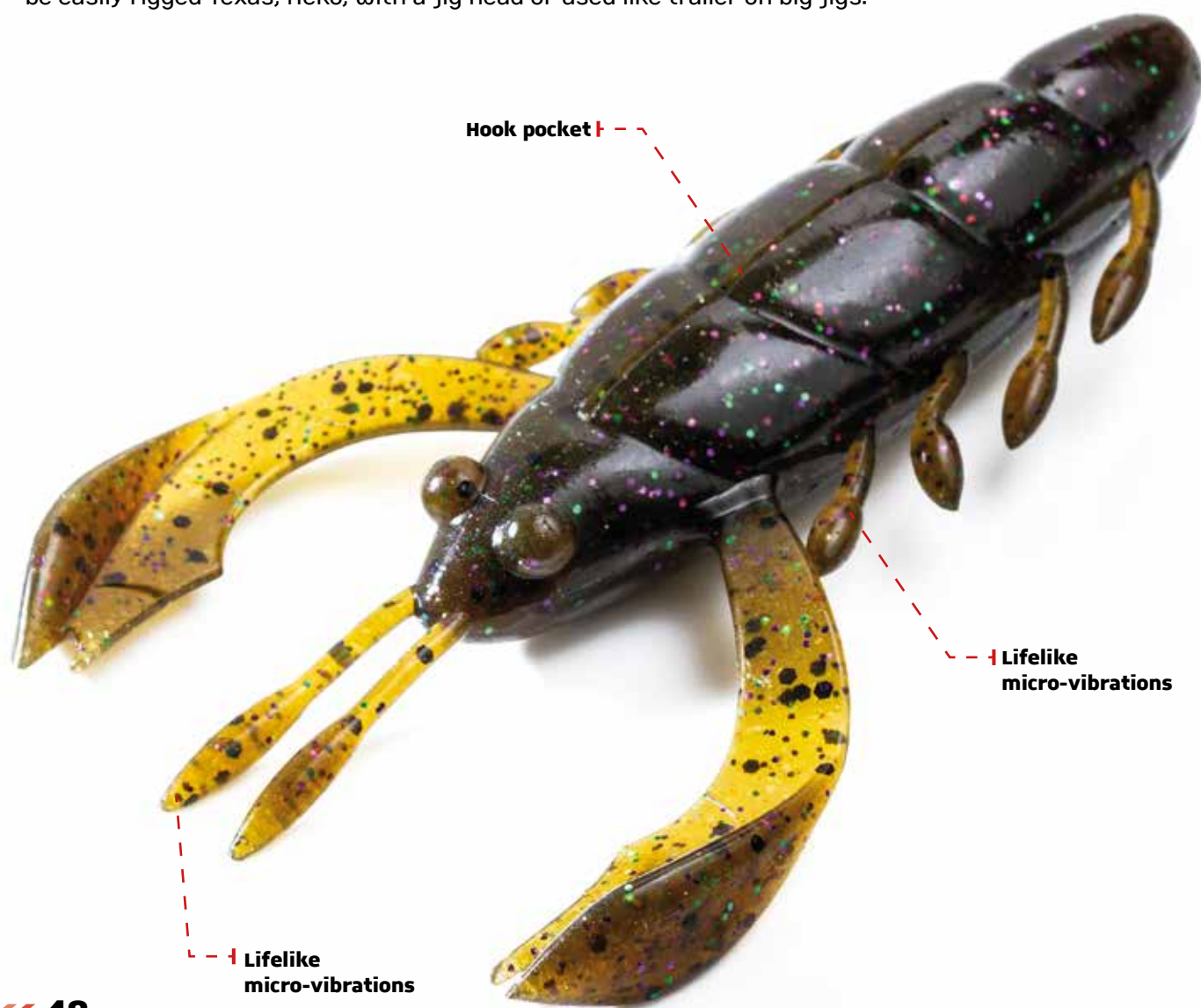


**SVcraw** 3.5" **MAGNUM**  
super vibration craw

Length **3.5 in**  
5 pcs. per pack



The SV Craw 3.5" is the "magnum" version of Molix's most popular SV Craw. The claws, which are the most functional and mobile part of this bait, have great amount of vibration during descent or retrieve. It's fat but compact body features a great penetration into the heaviest of cover. The SV Craw 3.5" can be easily rigged Texas, Neko, with a jig head or used like trailer on big jigs.



# CRAWS





# SATOR WORM 4"

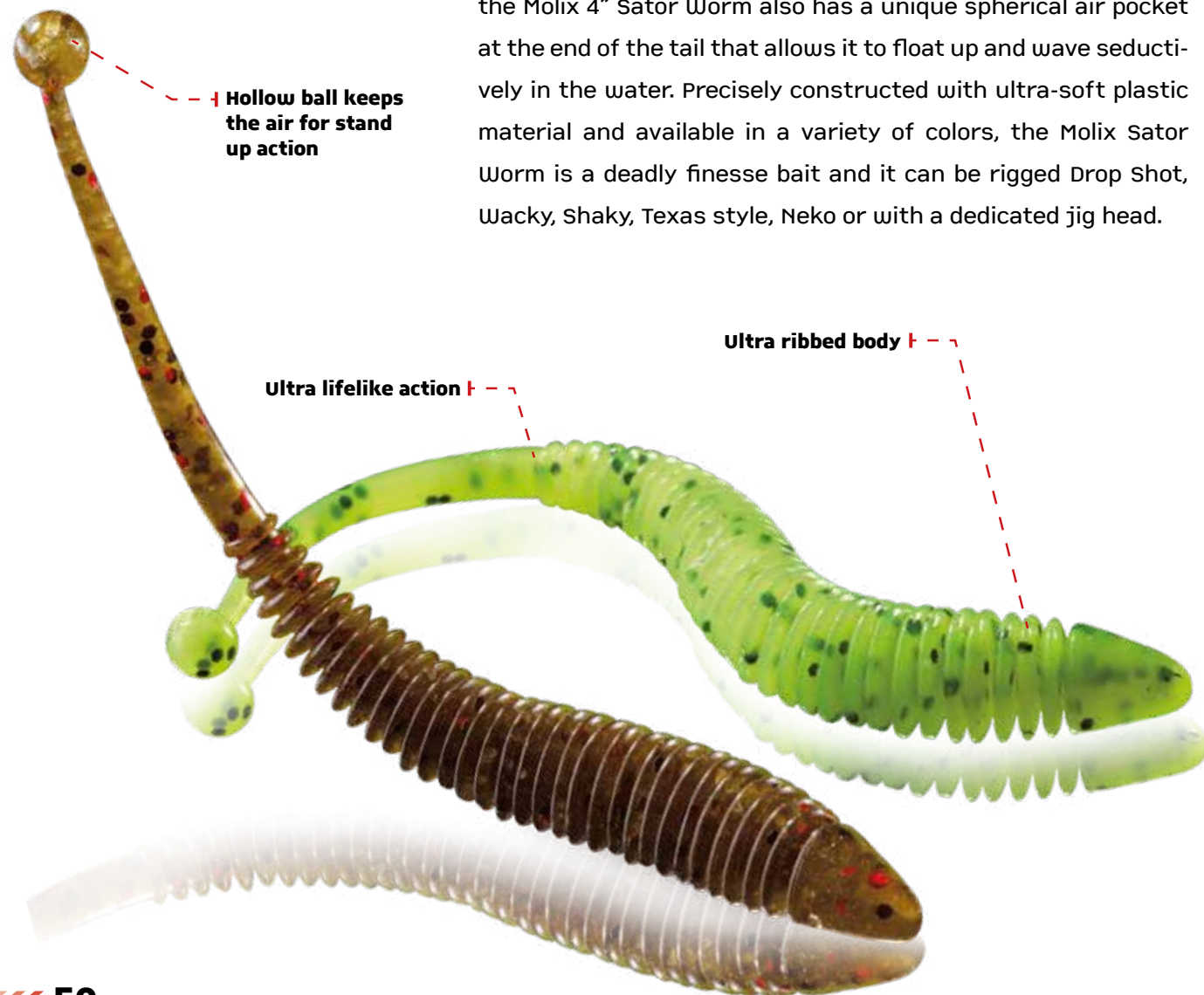
REGISTERED  
DESIGN

Length **4 in**  
10 pcs. per pack

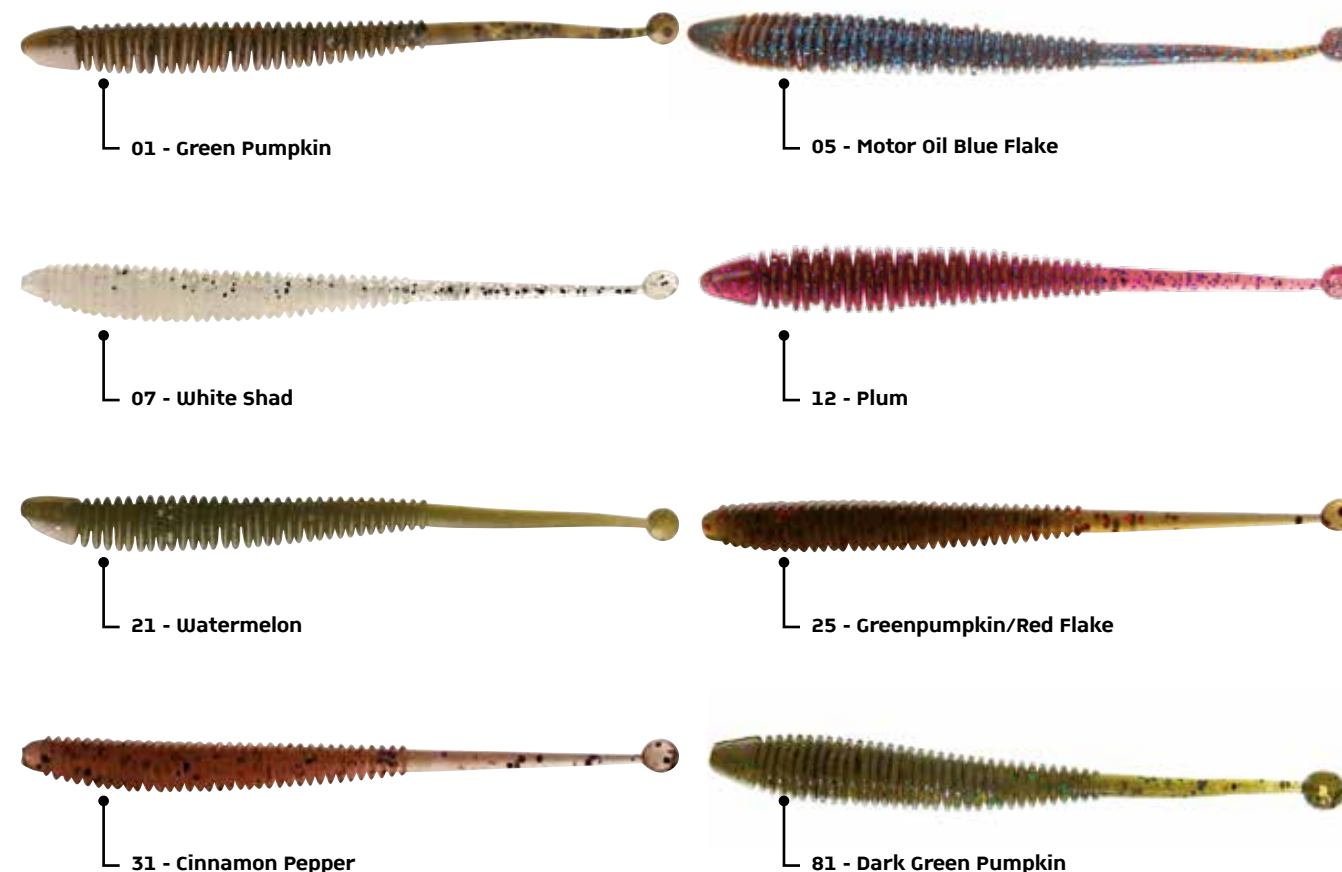


Carl Jocumsen | James Elam

Featuring a ribbed body that tapers down to an ultra-thin tail, the Molix 4" Sator Worm also has a unique spherical air pocket at the end of the tail that allows it to float up and wave seductively in the water. Precisely constructed with ultra-soft plastic material and available in a variety of colors, the Molix Sator Worm is a deadly finesse bait and it can be rigged Drop Shot, Wacky, Shaky, Texas style, Neko or with a dedicated jig head.



## WORMS





**NEW**

# SIDUS 145

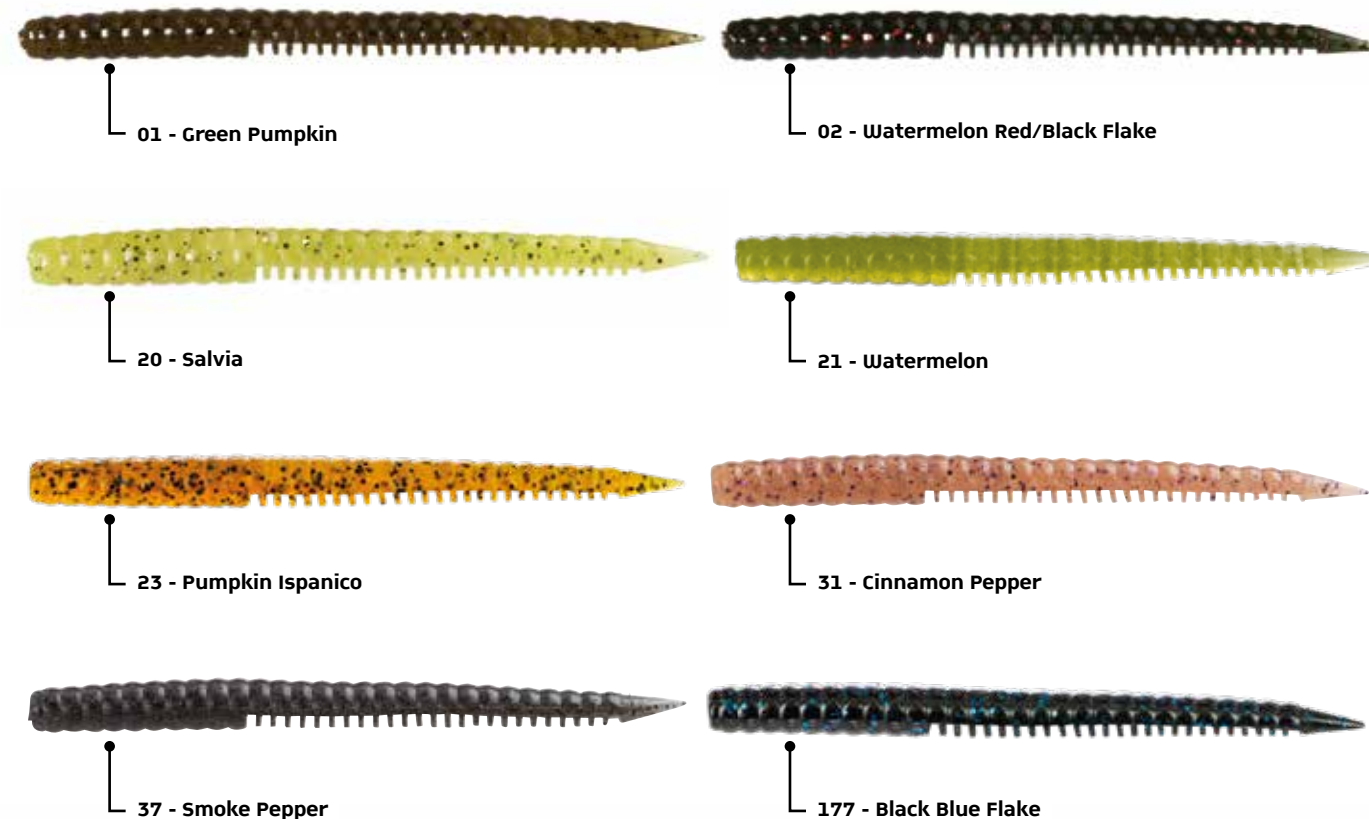
Length **5.7 in**  
10 pcs. per pack



The Sidus is poured with an exclusive mix of “variable density plastic” used for this bait and formulated to give this lure more consistency, longer castability and better penetration into the heavy cover. It’s also well balanced with a more natural movement underwater. The Sidus 145 is perfect for finesse presentation where the natural movement is a must and for pitching where a more compact head is important to penetrate the cover. The “flaps” along the body catch the air during the cast and release it in action to attract more fish. Also they give a life like action to the lure and create vibrations just like the real forage fish does. It’s poured with micro salt crystals and enhanced with Bio-Amino Scent, an exclusive natural extracts base formula.



## WORMS





# RASHAD

REGISTERED DESIGN

Length **3.8 in**  
6 pcs. per pack

Length **4.5 in**  
6 pcs. per pack



The Molix RA Shad Swim bait is a super dense soft plastic swim bait enriched with a craw and fish scented formula for added fish attraction. Very durable, it generates an extremely natural swimming action - no matter what retrieve speed - thanks to its thin tail and ribbed body. Rig it weighted, weightless, or on a jig head, the Molix RA Shad is also an excellent swim bait for any Umbrella style rig.

Ribbed body

Thin tail for lifelike swimming action



05 - Motor Oil Blue Flake

**NEW COLOR**



08 - Alburno Shad



61 - Savetta

**NEW COLOR**



64 - Marron Glacé

**NEW COLOR**



65 - Seducente Sexy Shad



81 - Dark Green Pumpkin

**NEW COLOR**



87 - Light Watermelon

**NEW COLOR**



97 - Ghost Gill





# RT SHAD 3.5"

## REAL THING SHAD

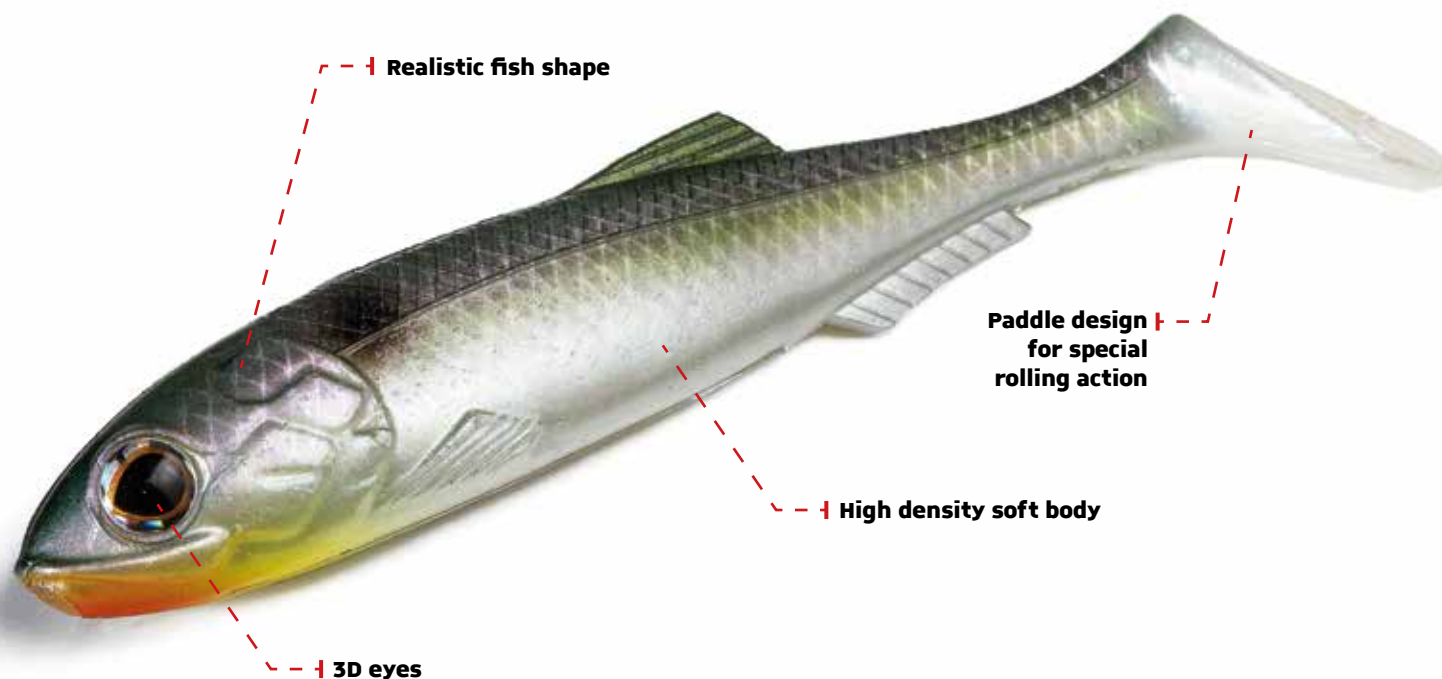
REGISTERED DESIGN

Length **3.5 in**  
5 pcs. per pack



The RT Shad 3.5 "is a small and realistic soft shad made of a soft high density blend. The design mimics the shapes of the small forage fish.

Shape, hydrodynamic profile and the big paddle give it an original and realistic movement and a great stability using it with different rigs. The swimming action is very natural and vibrant, with a rolling effect during the retrieval. Great versatility and effectiveness. It can be used for a large number of predators: recommended for Smallmouth and Largemouth Bass.



50 - Vairone



58 - Perch



59 - Mullet

**NEW COLOR**



97 - Ghost Gill

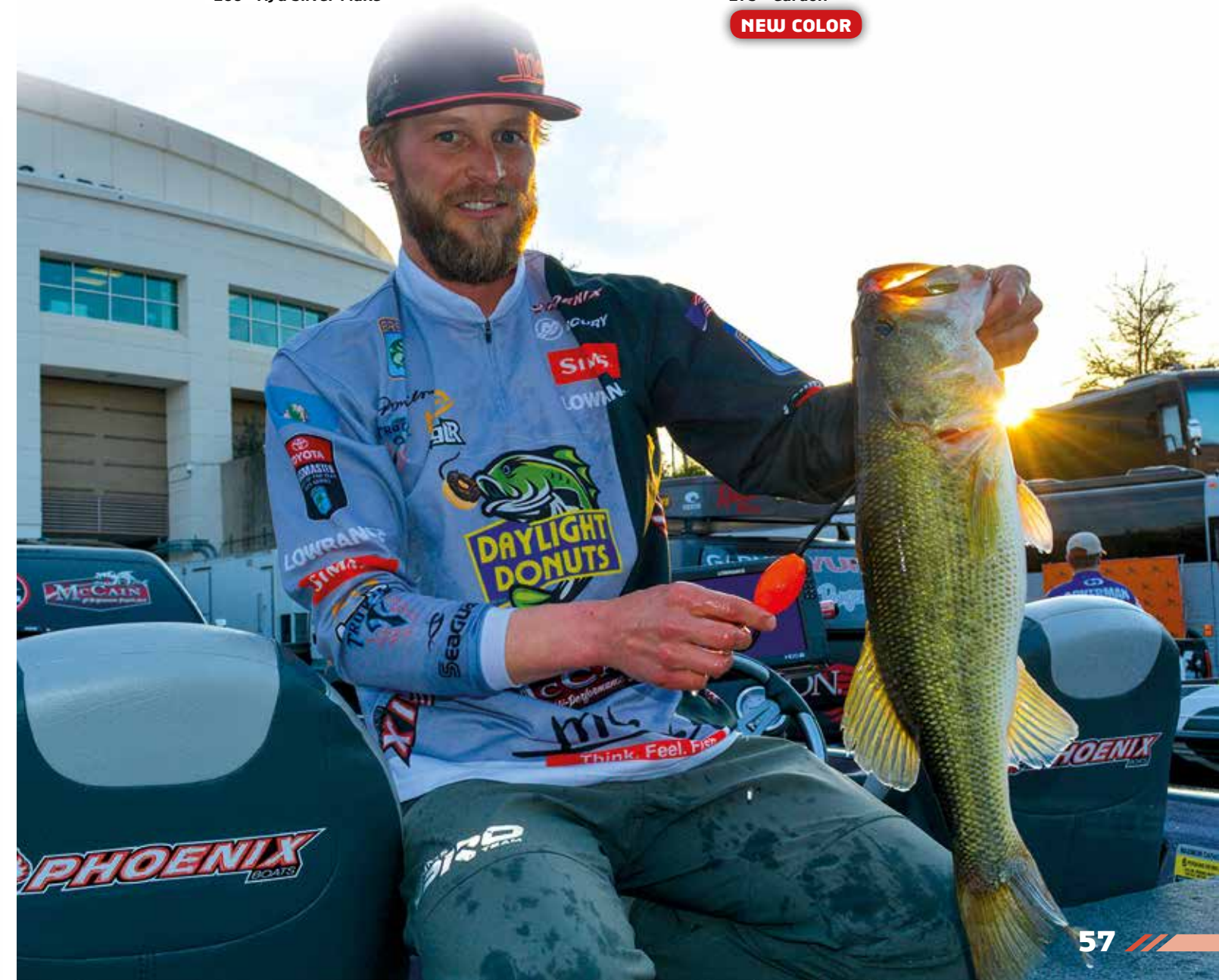


166 - Ayu Silver Flake



173 - Gardon

**NEW COLOR**





**Trago**  
**VIB**

Weight **3/8 oz**

Weight **1/2 oz**

**APPROVED**



Brandon Palaniuk | Carl Jocumsen | Mike Iaconelli | James Elam | Justin Lucas

The Trago Vib is a "metal concept lure" excellent for vertical presentations or fast retrieves, made possible thanks to the excellent balance and irregular wobbling action during the fall. The special paint finished through the "electro-painting" process ensures maximum strength and durability even under extreme fishing use, both freshwater and saltwater, a territory yet to be explored for this category of baits. The double hooks offer a wider opening angle so as to allow ready and safe hook ups. During our tests the Trago Vib, during winter and autumn, was effective with slow vertical presentations while it is recommended a faster retrieve in the warmer months when predators are active.



28 - Verde Tempesta  
**NEW COLOR**



43 - Giallo Metal  
**NEW COLOR**



45 - Viola Metal  
**NEW COLOR**



46 - GT



112 - Pearl White





# SB Crank

## Square Bill

Weight **3/8 oz**  
Length **2.1/4 in**  
Action **Floating**  
**0 to 3 Feet Deep Range**  
**Rattlin'**



The SB Crank 55 is a square bill for power fishing cranking, in spots with tangled covers. It moves easily through the obstacles, without losing the wobbling movement. This action, during slow retrievals, characterizes the originality of this lure compared to other crankbaits. The compact body support the casting and makes the bait effective as soon as you touch the reel. Also try making it wag on water or pushing it firmly into deep areas.





# SCULPO DR Rattlin'

Weight **1/2 oz**  
Length **2.1/4 in**  
Action **Floating**  
**6 to 8 Feet Deep Range**  
**Rattlin'**



The Sculpo is a crank developed to make the angler's life easier. This bait is tuned and colored to face the toughest fishing condition found over the United States. This lure possesses a proper weight balance system that gives it extra buoyancy and movements that are irresistible to large predatory game fish. The Sculpo has a unique wobbling action that match perfectly the movement of a real forage bait or a madden crawfish and is readily suited to be fished in various conditions. Is a "low profile" crankbait with the innovative lip design that make this lure swimming smoothly and snagless even among the heaviest cover. The lip is build with a new high density PolyCarbonate which gives more durability to the lure even during retrieves under rocky and hard bottoms. The Sculpo's "rattlin" is build with glass-ceramic balls. But the main feature of the Sculpo is the innovative B.E.S. (Balanced Emersion System) a combination between internal weights and volume that allow it to trigger more bites during the natural buoyancy of the lure.



— Lip design for ultra snagless and original wobbling action





**NEW**  
**SCULPO**  
**MR Rattlin'**

Weight **1/2 oz**  
Length **2.1/4 in**  
Action **Floating**  
**3.5 to 5 Feet Deep Range**  
**Rattlin'**



The Sculpo is a crank developed to make the angler's life easier. This bait is tuned and colored to face the toughest fishing condition found over the United States. This lure possesses a proper weight balance system that gives it extra buoyancy and movements that are irresistible to large predatory game fish. The Sculpo has a unique wobbling action that match perfectly the movement of a real forage bait or a madden crawfish and is readily suited to be fished in various conditions. Is a "low profile" crankbait with the innovative lip design that make this lure swimming smoothly and snagless even among the heaviest cover. The lip is build with a new high density PolyCarbonate which gives more durability to the lure even during retrieves under rocky and hard bottoms. The Sculpo's "rattlin" is build with glass-ceramic balls. But the main feature of the Sculpo is the innovative B.E.S. (Balanced Emersion System) a combination between internal weights and volume that allow it to trigger more bites during the natural buoyancy of the lure.





# Lipless Crank

Lipless Crankbait

Weight **3/4 oz**  
Length **2.3/4 in**  
Action **Sinking**



Carl Jocumsen | James Elam

"A modern lure with a unique and inimitable swimming action". The new balanced system of internal tungsten weights (3/4oz) and the original aerodynamic shape of the body make this bait easy to use. Cover a lot of water in a short time with excellent performance. The most important change is in the special high-frequency sound produced by tungsten balls that combined with the innovative ABS Special Grade body gives this lure an excellent attractive power.

Designed and developed to face the wind and strong currents. But excel especially with large freshwater predators such as black bass and big trout. Use it with confidence when predators are stationed in areas rich of obstacles and its effectiveness will surprise you.



Original hydrodynamic shape for power fishing specialist

Exclusive balanced system of internal tungsten weights



05 - Alqueva Craw



122 - Super Ayu



128 - MX Blue Back



130 - Mud Craw



133 - Dark Craw



SW30 - Pearl White Holo Stripe





# Finder Jerk 110

Weight **5/16 oz**  
Length **4.1/2 in**  
Action **Suspending**  
**1.7 to 4 Feet Deep Range**



It is a jerk Minnow with armor made of stainless steel, it is equipped with extra strong split rings and high quality treble hooks. The paddle, reinforced with a new synthetic resin, provides an excellent impact resistance. The lure creates a vibrant movement in a balanced trim. It is effective for finesse presentations for medium and large-sized predators. It swims very well with a smooth retrieval. Jerking it with decision offers significant performances.

**D.L.S (Dynamic Load System)**  
that improve the casting distances



05 - Alqueva Craw  
**NEW COLOR**



11 - Black Gold  
**NEW COLOR**



93 - MX Holo Shad  
**NEW COLOR**



122 - Super Ayu  
**NEW COLOR**



126 - MX Ghost Minnow



180 - Silver Albino  
**NEW COLOR**





# Jerk 95DR

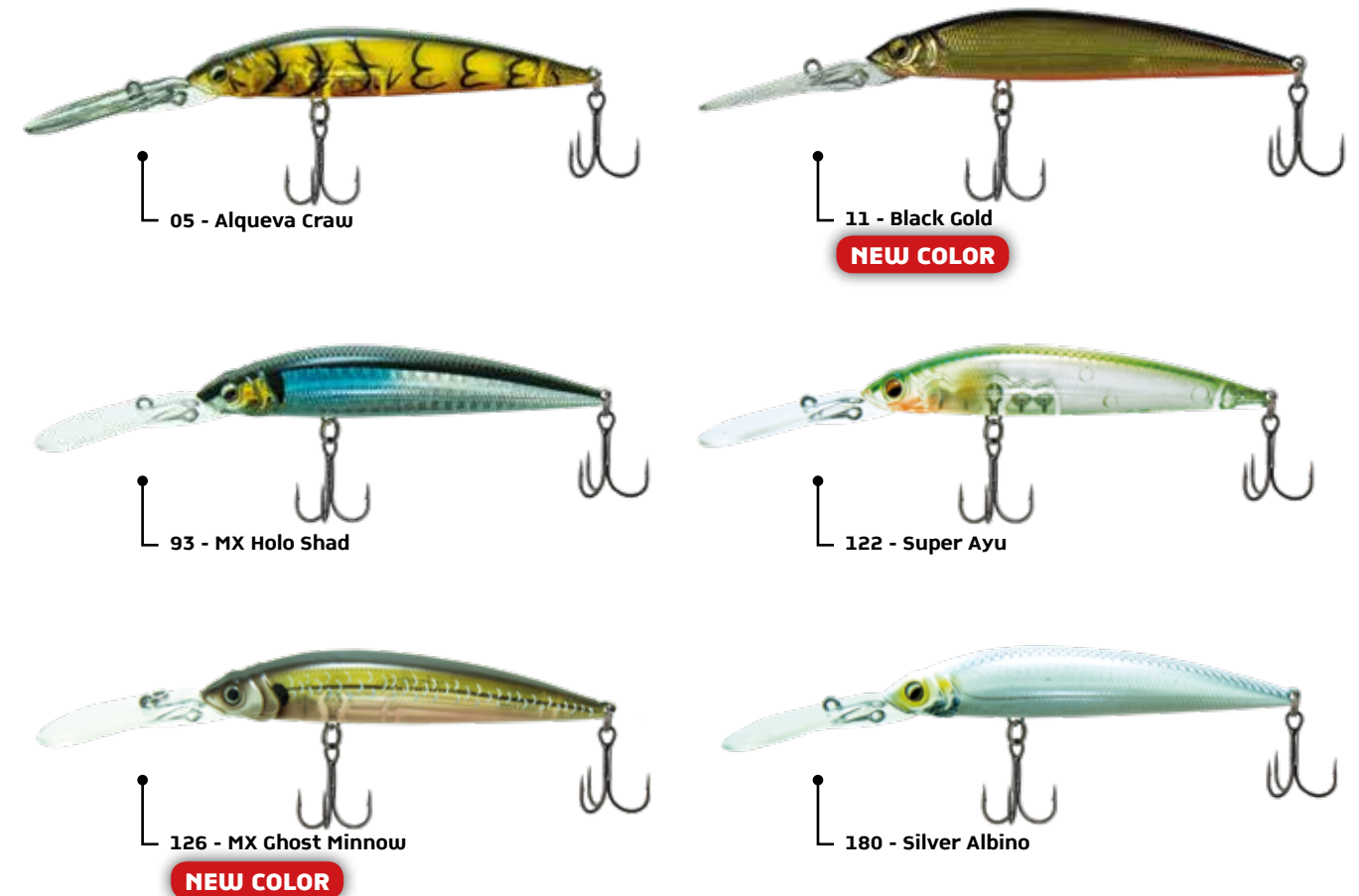
JERKBAIT DEEP RUNNER  
REGISTERED DESIGN

Weight **7/16 oz**  
Length **3.3/4 in**  
Action **Floating**  
**8 to 11.5 Feet Deep Range**



The Jerk 95 DR is a lure suitable for extreme conditions. It is a versatile lure that can be used in winter, with extremely cold waters, and in summer when the temperature of the waters increase dramatically. It is particularly effective also in crowded fishing spots. All these conditions make the predator particularly apathetic. The floating action help the angler to keep the lure in the strike zone longer, using it between rocks limiting the risk of stranding. Thanks to the large lip you can easily reach the desired fishing depth. During the retrieval the main feature of the Jerk 95 DR is a "tight swimming"; an other feature is the exclusive rolling due to the Molix's internal arrangement of weights D.L. S (Dynamic Load System) that improve the casting distances and shakes the bait keeping it stable on the its axis even with fast retrievals. It is made with quality materials, components and colours complete this particular bait with which you can fish all year long.

**D.L.S (Dynamic Load System)** that improve the casting distances





# Shaman

Weight **7/16 oz**  
Length **3.1/4 in**  
Action **Floating**  
Surface **Deep Range**



APPROVED

**Golden Team USA**

Carl Jocumsen | James Elam

Are all poppers the same? Only apparently! Just think about so many high quality poppers, all of them are top water baits right? Right! All of them are excellently finished with super treble hooks right? Right! So all these lures are the same right? Wrong! Because only Molix is designed and developed totally in Italy sharing experiences and ideas with several professional anglers that made their hobby a real lifestyle. The Shaman is an innovative high performances lure, original, easy to cast and created by anglers for anglers. What else?



Feather-dressed  
treble hook

Ultra splash popping action



08 - Silver Bait



33 - Tigre Ardente



49 - The Verde



53 - Shinner Shad

NEW COLOR



55 - Ghst Shell NC



57 - US Blue Gill

NEW COLOR





NEW PROJECT

# Lizard

Length 6 in

The Molix Lizard is an Old School bait for bass fishing designed by Molix, with the contribution of the Bassmaster Elite Pro staff James Elam. His experience has helped Molix staff to develop this product according to the modern concept of fishing with the Lizard. The small details have created important hydrodynamic differences, such as the body finishing composed of a realistic Skin Texture in the upper part and a ring for the release of small air bubbles in the lower part. The new mixture of micronized salt and the original long-lasting Craw scent allows high performances even after a prolonged use. Little rod solicitations are enough to obtain immediate natural micro-movements.



**COMING  
SOON**



NEW PROJECT

# TW 110B TOP WATER 110 BAITFISH SUPER SOUND

Weight **3/4 oz**  
Length **4.1/4 in**  
Action **Floating  
Rattlin'**

The Top Water 110 Baitfish Super Sound is a "walking the dog" bait designed to stimulate the most lethargic predators. The tapered shape of the body allows long and precise casts as well as making it very easy to animate with the classic wtd retrieval. The metal balls inside the special resin body of the bait, they create an exclusive "sound" of great impact.

The TW110B is armed with three strong treble hooks and the colors are made with UV coating finish.



**COMING  
SOON**







-2019-

think. feel. fish.



**Molix lures 100% Italian designed**



**MOLIX USA CORP.**

591 Mantua Blvd STE 201 - Sewell, NJ 08080-1032 - USA | [info@molixusa.com](mailto:info@molixusa.com)

[molixusa.com](http://molixusa.com)

| follow us

